



TEAM ANTARCTICA 2022

CLIMATE OF CHANGE

VENTIENT. THE WAY TO BE



**“CAN HUMANKIND
REALLY SCREW UP
THINGS THAT FAST?”**

Robert Swan OBE





**IT'S JUST OVER A
CENTURY SINCE
HUMANS REACHED
THE SOUTH POLE**



**IN JUST A FEW
DECADES, CLIMATE
CHANGE WILL
DEVASTATE
ANTARCTICA**




**AND ANTARCTICA'S
DEVASTATION WILL
BE MIRRORED
ACROSS THE WORLD**



**HOW WILL WE
ANSWER TO THE
NEXT GENERATION
FACING AN
INHOSPITABLE
PLANET?**

**WE HAVE TO
ACT NOW**



Building on our ESG leadership,
Ventient is helping to combat the
world's biggest challenge:

CLIMATE CHANGE



In March, our team will join
2041 Foundation trekking across
Antarctica to bring more urgency to
this critical cause.

WHAT IS VENTIENT DOING



5,702.14 GWh

of green energy produced
by Ventient Energy in 2021



1,182,732 T

of CO2 avoided
in 2021



Target:

**46% emissions
reduction by 2030**

Reduced Scope 2 emissions
by 26% in 2021

By the end of January 2022
our scope 2 reduction
reached 87% by ensuring that
all farms across Europe are
powered by renewable energy

Harvesting rainwater at wind farms where possible

€2.3M to support communities across Europe
through various Ventient contributions schemes

OUR FUTURE LIES IN THE ECOSYSTEM OF ANTARCTICA

Antarctica is the key indicator of the environment's health.

At the current rate of global warming, Antarctica's melting could double its contribution to sea level rise by 2050.

The next generation will pay the price of global warmth



(Nature Geoscience)

**WHAT DOES THIS
MEAN FOR PEOPLE,
THE PLANET AND
OUR BUSINESS,
THE GREENEST OF
ENERGY PROVIDERS?**



2°C GLOBAL WARMING BY 2050 COULD LEAD TO...

Deadly heat



37% of world's population exposed to severe heat waves at least every five years (IPCC)



2 billion people exposed to up to 60°C temperatures up to 45 days a year (Time)



In Paris alone, summer temperatures regularly reach **43.8°C** (Time)



**2°C GLOBAL
WARMING BY 2050
COULD LEAD TO...**

Devastating floods



Up to **38 cm** rise in
sea levels (IPCC)



37% of world's population
living in coastal communities at risk
(Climate Center 2019)



300 million people underwater
(Climate Center 2019)

2°C GLOBAL WARMING BY 2050 COULD LEAD TO...

Inhospitable habitats



80% of world's oceans affected by ocean warming and acidification (British National Oceanography Centre)



70% of coral reefs destroyed (WWF)



Global warming puts **18% of insects, 16% of plants and 8% of vertebrates at risk** (WWF)

Colonies of Adélie penguin have decreased at least 80% since the 1970s

In 2005, a severe heatwave killed off-most of White lemuroid ringtail possums

Reproductive rates of Ringed Seals in the Arctic have declined dramatically

Staghorn Coral have declined by up to 98% in the Caribbean alone since the 1980s

(Guardian)

**AND THAT'S
ONLY SCRATCHING
THE SURFACE...**



THE CHILLING REALITY OF GLOBAL WARMING

- Death
- Conflict
- Migration
- Famine
- Mass extinctions

The list goes on.

IT'S ALREADY HAPPENING

The impact of extreme weather



In 2015, a heatwave in India killed **2,500** people

In the summer of 2019 heatwaves killed:

1500	400	900
in France	in the Netherlands	in the UK

(Interesting Engineering)



Widespread flooding killed **240** people across Europe in 2021 (BBC)



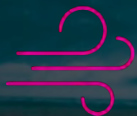
Extreme weather events caused **\$1.5bn** of damage in 2021 (BBC)

**WHAT DOES THIS
MEAN FOR VENTIENT
ENERGY AND OUR
STAKEHOLDERS?**

THE MELTING OF ANTARCTICA IS CREATING...



Changing **weather**
patterns



Unpredictable **wind**
and sun...



More **unstable and**
violent weather...

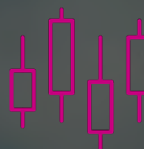
...WHICH THREATENS THE VENTIENT WAY



Wind turbines stop
spinning...



Impacting energy
supply...



The stability of our
business...



Our support to
pensioners...



The communities
we serve...



And our contribution
to a greener future...

CLIMATE CHANGE: A COLLECTIVE ISSUE THAT DEMANDS COLLECTIVE ACTION

We're committed to combating climate change through renewable energy, sharing, and education.

But we can't solve the problem on our own. We have to work together, collaborate and act.



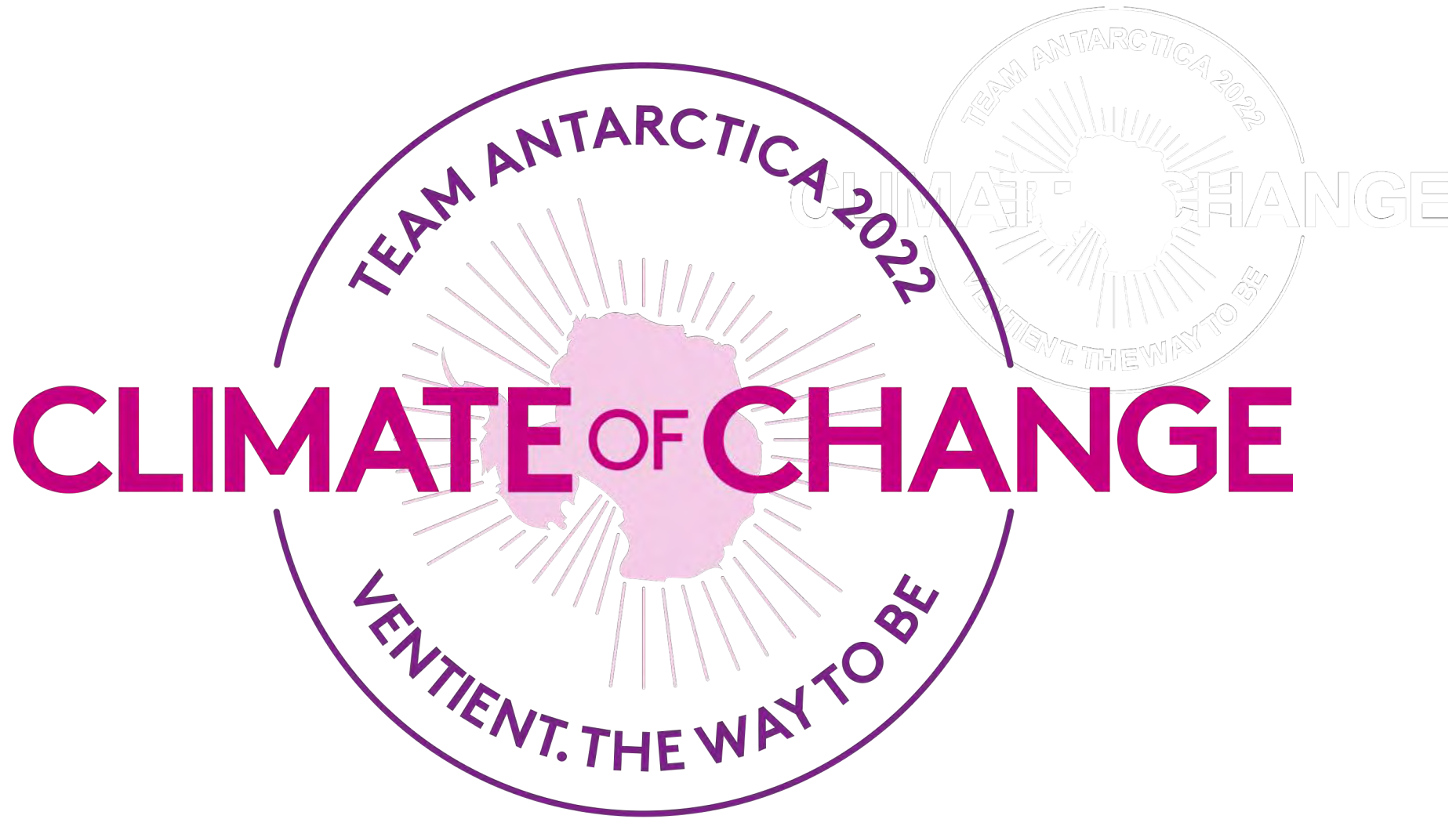


CREATING A CLIMATE OF CHANGE

We want to:

- Lead by example
- Educate others
- Be part of the global movement for the protection of the environment and Antarctica
- And drive action

That's why we're going on a journey...





ROBERT SWAN OBE

- Completed the longest unassisted march to the South Pole in 1986
- First person to walk to both of Earth's Poles
- Awarded the Polar Medal by Her Majesty, Queen Elizabeth II
- United Nations Goodwill Ambassador for Youth
- Founder of 2041 Foundation



THE 2041 FOUNDATION

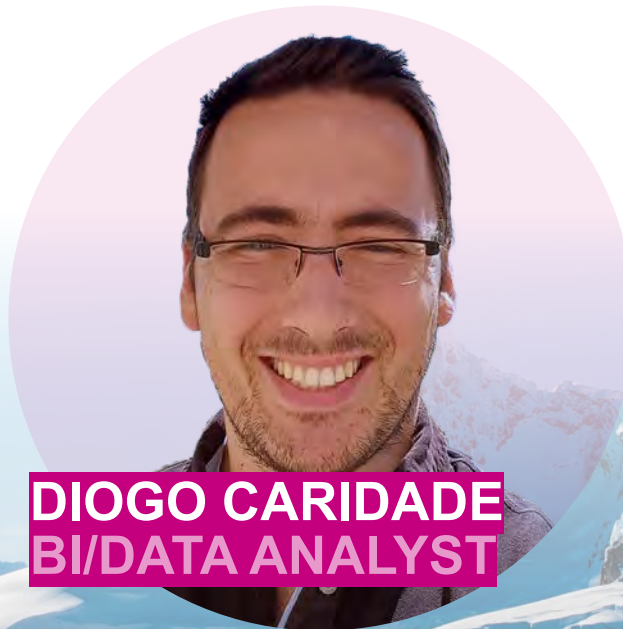
2041
FOUNDATION

- Engaging businesses on climate science, personal leadership and sustainability to preserve the world's last wilderness, Antarctica.
- The Madrid Protocol banning exploitation of Antarctica will expire in 2041.
- In 1991, French explorer Jacques Cousteau tasked Robert with a 50-year mission to save the continent.
- Jacques urged Robert to engage people on climate change and promote the use of renewable energy.
- From this, Robert's 2041 Foundation was born.

VENTIENT EXPEDITION TEAM



MARK JONES
CEO



DIOGO CARIDADE
BI/DATA ANALYST



HARRIET KELLY
FINANCIAL MODELLER

A person wearing a red jacket and dark pants stands on a dark, rocky beach, looking out at a massive, towering glacier. The glacier is a mix of white and blue ice, with visible crevasses and a sheer face. The water in the foreground is calm, reflecting the light. The sky is a pale, hazy blue.

WHAT WE'LL BE DOING THERE

- Experiencing climate change first-hand
- Learning cutting-edge insights from the experts
- Developing our ability to lead real change
- Joining a team promoting the preservation of Antarctica since 1986
- Enhancing the Ventient commitment to the environment

A photograph of a herd of elephants crossing a dirt road in a savanna landscape. The elephants are in the foreground and middle ground, moving from left to right. The background shows acacia trees and a cloudy sky. The image is used as a background for the slide.

WHAT WE'LL BE DOING ON OUR RETURN

- Raising awareness
- Educating others
- Driving collective action with our stakeholders, including you.

We want you to be part of our sustainability journey, starting from our carbon footprint.

**WHAT ACTIONS ARE
WE TAKING NOW?**



WE'RE FOCUSING ON THREE AREAS:

- Reducing Scope 1 emissions targeting transport (our car fleet and business travel)
- Assessing Scope 3 emissions through collaboration:
 - With Supply chain to accurately capture Scope 3 emissions
 - With Banks to hold an account for their environmental standards
- Involving our stakeholders into our sustainability Journey

We will keep measuring our efforts through GRESB, the global ESG benchmark to maintain our Sector Leadership on sustainability.

**BUT AS WE SAID
BEFORE, WE CAN'T
DO IT ALONE...**



WE'RE IN THIS TOGETHER

The fate of
Antarctica is
our fate

Everything
depends on what
we do next

Join us on our
journey to a
sustainable future.

A full-page background image featuring a serene winter scene. In the foreground, a calm, deep blue body of water reflects the sky and the surrounding landscape. Several ice floes are scattered across the water's surface. In the middle ground, a range of rugged mountains is covered in thick, white snow. The peaks are sharp and jagged, with some dark rock faces visible. The sky is a clear, vibrant blue, and a bright sun is positioned in the upper left corner, creating a strong lens flare effect. The overall atmosphere is peaceful and majestic.

THANK YOU

QUESTIONS

A full-page background image showing a majestic, snow-covered mountain range under a clear, vibrant blue sky. A bright sun in the upper left corner creates a strong lens flare. The calm water in the foreground perfectly reflects the mountains and the sky. Several icebergs are scattered across the water's surface, adding to the wintry, serene atmosphere.